



# Greenleaf Boulevard Traffic Calming

# Goals Of This Project

## 1. Make a clear and safe road network

Residents asked that the City make improvements that will help slow traffic on Greenleaf Boulevard.

## 2. Create a safe roadway for all neighborhood residents

Residents have expressed concern for both pedestrians and cyclists as it is the main connection from the neighborhood to the city.



**Parkview Hills**  
Neighborhood Plan 2020

# Greenleaf Boulevard Traffic Calming

# Greenleaf Boulevard As Is

## Wide Neighborhood Street

Greenleaf Boulevard is 28 feet wide in each direction, this is excessive for the neighborhood.

## Drivers Are Speeding

The City Traffic Engineer found that only 25% of all drivers obeyed the posted speed limit, which means a majority of drivers on Greenleaf Boulevard are speeding.

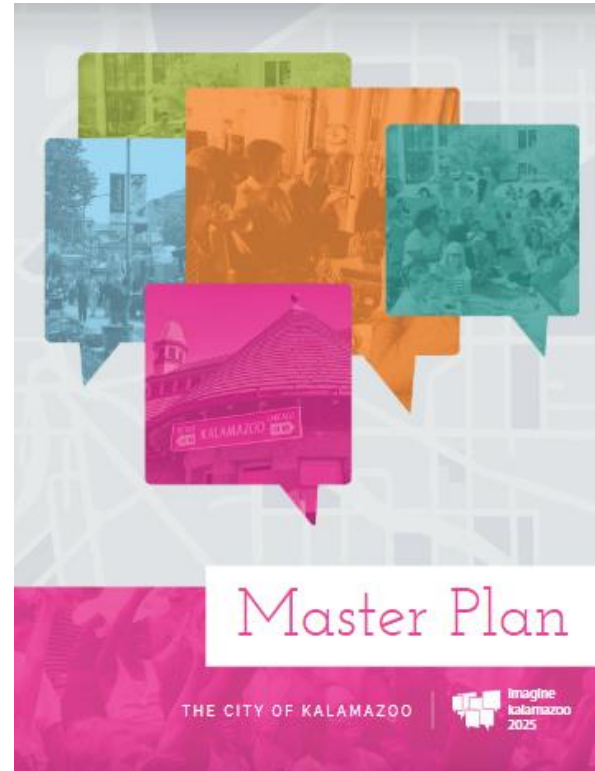


Speed Radar, Source: [en.wikipedia.org/wiki/Radar\\_speed\\_sign](https://en.wikipedia.org/wiki/Radar_speed_sign)

# Greenleaf Boulevard Traffic Calming

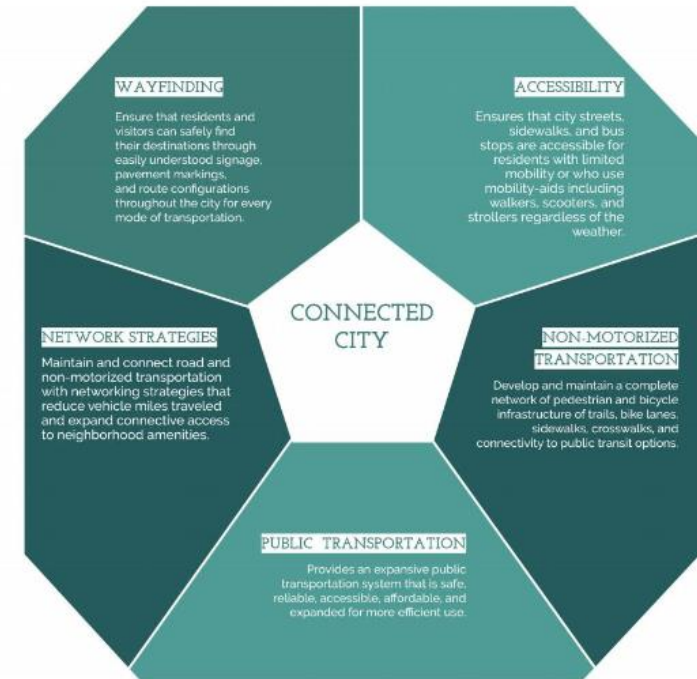
# Principles of a Connected City

- Accessible
- Comfortable
- Connected
- Convenient
- Engaging
- Vibrant



Strategic Goal: Complete Neighborhoods.

Figure 1



## Greenleaf Boulevard Traffic Calming

# What We Heard

## Input Opportunities

Online Survey throughout July 2021  
In-Person Neighborhood Meeting on July 22, 2021

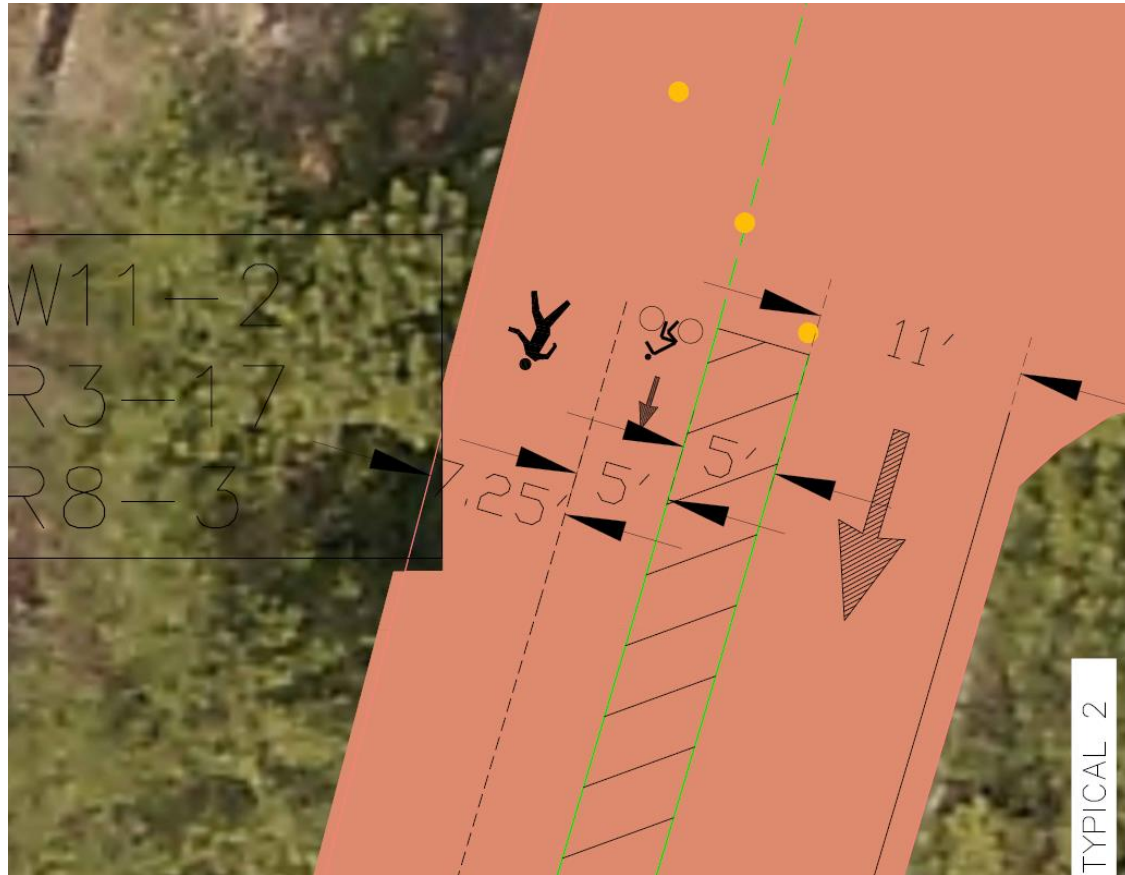
## Summary of Results

57% Said Reduce to One-Lane  
86% Said Add Walk/Bike Facilities  
9% Said Keep It The Same  
Residents also wanted **parking** near the Tennis Courts and the neighborhood Playground



# Greenleaf Boulevard Traffic Calming

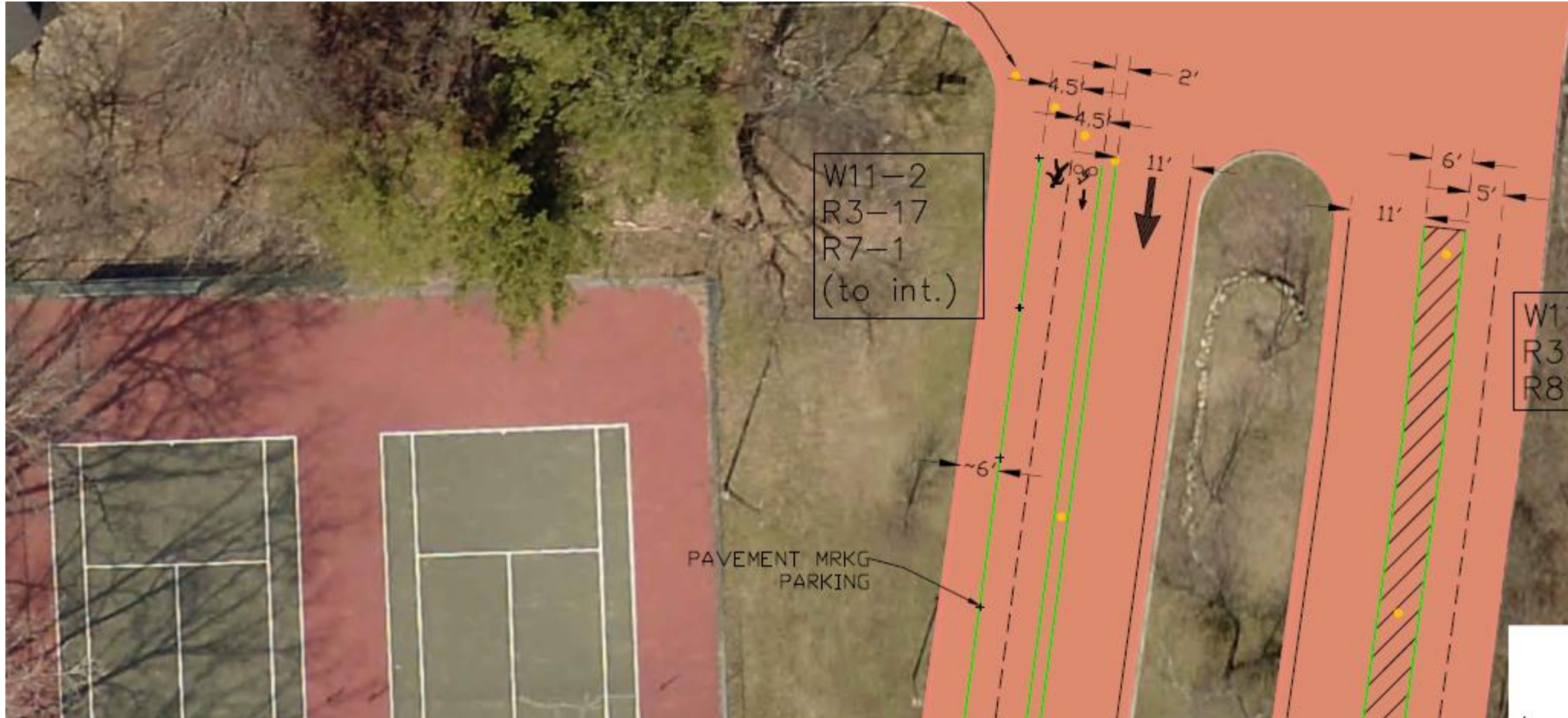
# Right Sizing Travel Lanes



Flexible Bollards, Source: [develotech.com/en/bicycle-path-flexible-bollard/layout/](https://develotech.com/en/bicycle-path-flexible-bollard/layout/)

## Greenleaf Boulevard Traffic Calming

# Parking Near Tennis Courts



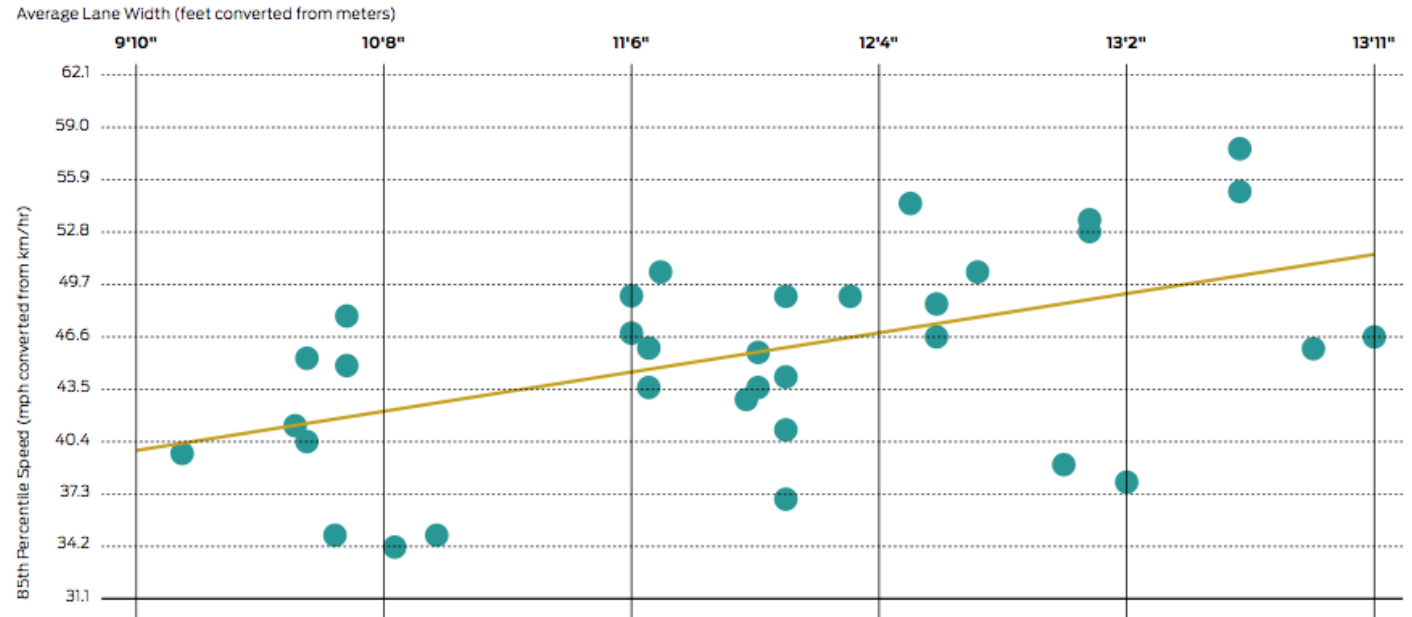
## Greenleaf Boulevard Traffic Calming

# Why Right-Sizing?

When travel lanes are striped to define the path of travel that are more than 11 feet, they create a more forgiving buffer to drivers.

Narrower streets help promote slower driving speeds which, in turn, reduce the severity of crashes.

**Wider travel lanes are correlated with higher vehicle speeds.**



"As the width of the lane increased, the speed on the roadway increased... When lane widths are 1 m (3.3 ft) greater, speeds are predicted to be 15 km/h (9.4 mph) faster."

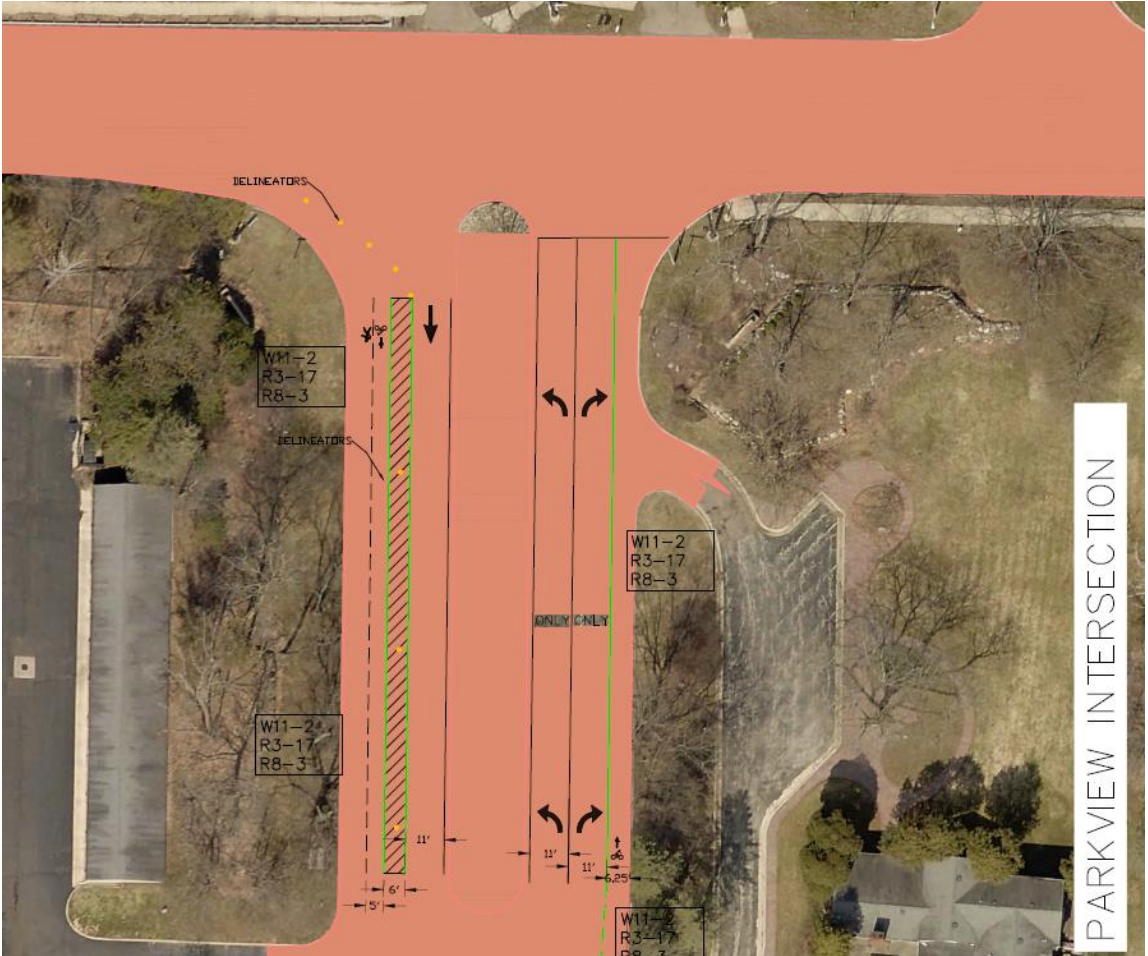
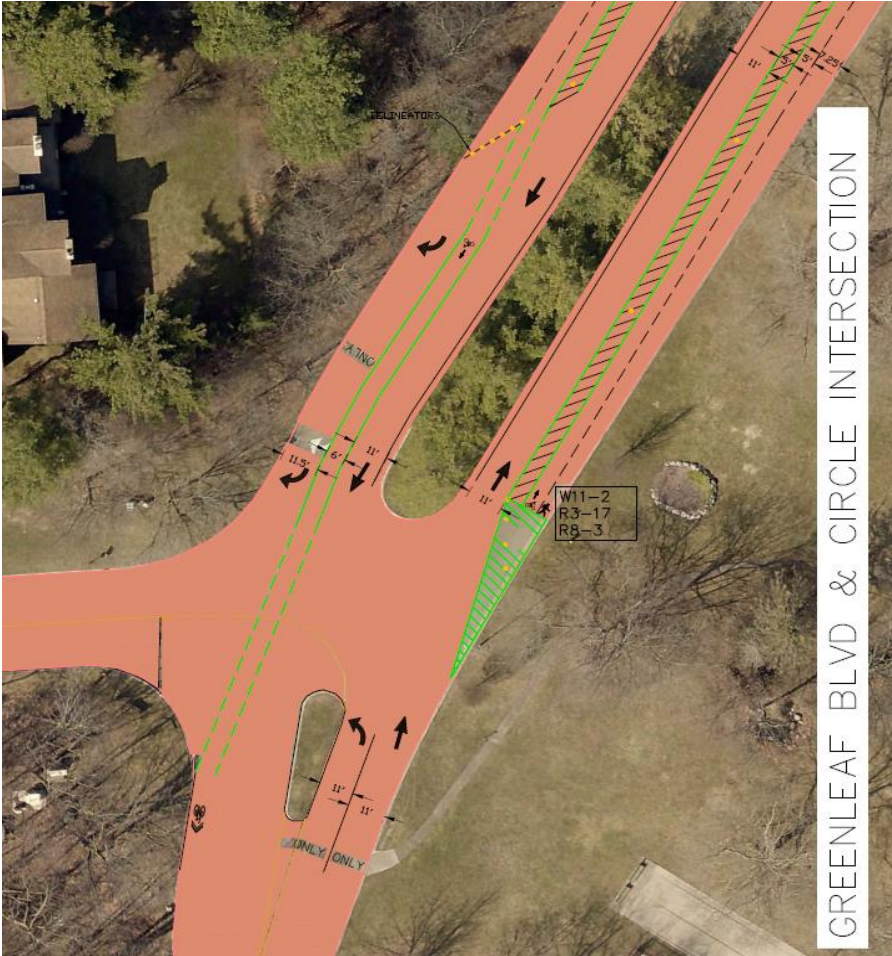
Chart source: Fitzpatrick, Kay, Paul Carlson, Marcus Brewer, and Mark Wooldridge, 2000. "Design Factors That Affect Driver Speed on Suburban Streets." *Transportation Research Record* 1751: 18-25.

— Regression Line  
● 85th Percentile Speed of Traffic

## Greenleaf Boulevard Traffic Calming



# Major Intersections



# Greenleaf Boulevard Traffic Calming

# Project Objectives

- Implement the Parkview Hills Neighborhood Plan
- Create a Safe Space for Pedestrians
- Encourage Bicycle Travel as a Positive Alternative
- Improve Safety for Residents in Addressing Current Unmarked and Unsafe Parking at Amenities
- Identify and Mark Safe Parking and Bus Stop Locations
- Cooperate with NAPH to measure and adjust as necessary

---

## **Greenleaf Boulevard Traffic Calming**



[baisdend@kalamazoo.org](mailto:baisdend@kalamazoo.org)